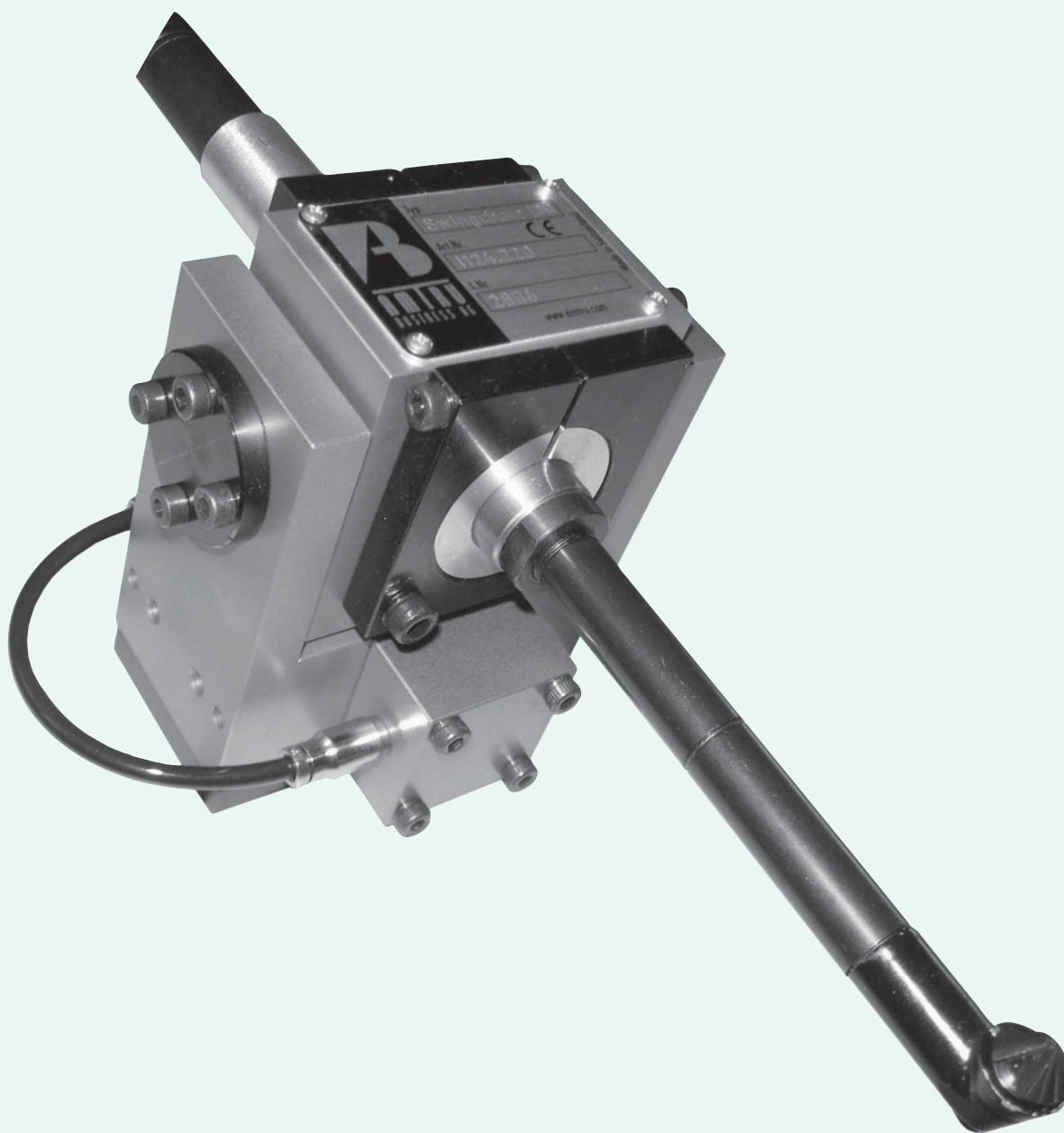




# SWINGCHAM SERIES 100



# SWINGCHAM SERIES 100



**I** L'utensile SWINGCHAM viene impiegato nei processi di sbavatura dei fori sia in particolari metallici che non. È particolarmente adatto per lavorare superfici poco accessibili.

L'albero di contornatura ha una compensazione libera in due direzioni.

La pressione contro le superfici da lavorare può essere regolata da programma del robot. Il modello SWINGCHAM 110 ha una compensazione libera in tutte le direzioni grazie alla flessibilità dell'estremità.

Lo SWINGCHAM può essere fissato su un supporto statico (Toolstand) oppure direttamente sulla parte terminale di un robot.

Se il robot ha la necessità di usare più tipi di utensili, questi possono essere sostituiti automaticamente grazie ai cambi rapidi (Changing System).

Per garantire il funzionamento ottimale del motore è necessario utilizzare aria compressa filtrata e lubrificata.

**GB** The countersink tool SWINGCHAM is being used to countersink holes in metallic as well as nonmetallic parts. It is particularly well suited to work in badly accessible areas.

The countersink is freely compliable in two directions.

The pressure against the part edge can be set from the robot program. The countersink tip of the SWINGCHAM 110 is freely compliable in all directions thanks to its flexible tool mount (flex coupling).

The countersink tool can either be mounted stationary onto a tool stand (Toolstand) or onto the robot arm. If these tools at the robot have to be changed automatically, a tool changer (Changing Systems) is available.

To assure an optimal life of the air motors the compressed air must be cleaned and lubricated.

**D** Das Winkel-Senkwerkzeug SWINGCHAM dient zum Ansenken von Bohrungen in Werkstücken aus metallischen und nichtmetallischen Werkstoffen. Das Werkzeug eignet sich sehr gut zum Entgraten schlecht zugänglicher Stellen.

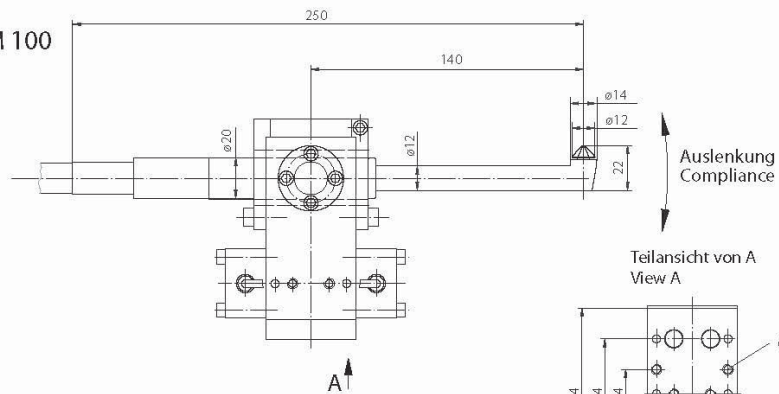
Der Senker ist in zwei Richtungen auslenkbar, wobei die notwendige Anpresskraft auf die Werkstückkante vom Roboterprogramm variiert werden kann. Beim SWINGCHAM 110 ist die Senkerspitze durch die flexible Werkzeugaufnahme (Flexkupplung) frei in alle Richtungen auslenkbar.

Das Senkwerkzeug kann entweder am Roboterarm oder stationär an einem Werkzeugständer (Toolstand) angebaut werden. Sollen diese Werkzeuge am Roboter automatisch gewechselt werden, so steht ein Werkzeug-Wechselsystem (Changing System) zur Verfügung.

Für eine einwandfreie Funktion benötigt der Luftmotorgeölte Druckluft.

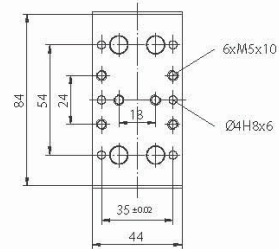
# SWINGCHAM SERIES 100

SWINGCHAM 100

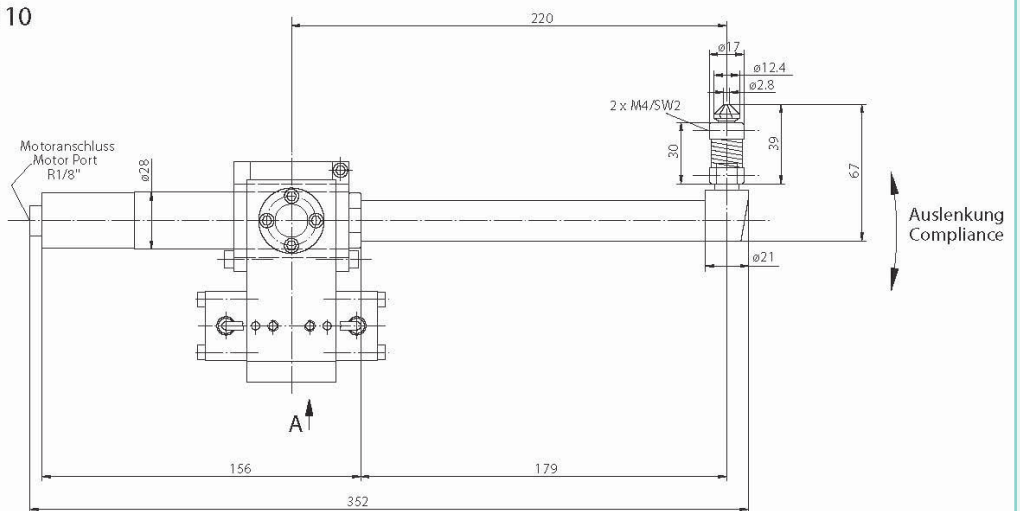


Auslenkung  
Compliance

Teilansicht von A  
View A



SWINGCHAM 110



Auslenkung  
Compliance

# SWINGCHAM SERIES 100



## DATI TECNICI

	SWINGCHAM 100	SWINGCHAM 110
Potenza motore	.20 W	.80 W
Velocità rotazione	.900 g/min	.500 g/min
Movimento di compensazione	.± 3.8°	.± 3.8°
Momento di compensazione a 6 bar	.2.4 Nm	.2.4 Nm
Consumo di aria	.2.5 l/sec	.5 l/sec
Ingressi alimentazione aria	.G1/4, 8/4 mm	.G1/4, 8/4 mm
Cutter	.3 mm / 6-esagono	.90° / Ø12.4 mm
Diametro montaggio utensile	.Ø10 mm	.Ø8 mm
Peso	.2.1 Kg	.2.8 Kg
Codice articolo	.1124.220	.1124.210

Altre velocità e tipi di fresa su richiesta.

## SPECIFICATIONS

	SWINGCHAM 100	SWINGCHAM 110
Power	.20 W	.80 W
Speed	.900 rpm	.500 rpm
Compliance	.± 3.8°	.± 3.8°
Compliance torque at 6 bar	.2.4 Nm	.2.4 Nm
Air consumption	.2.5 l/sec	.5 l/sec
Air connections	.G1/8, 8/4 mm	.G1/8, 8/4 mm
Cutter	.90° / Ø12 mm	.90° / Ø12.4 mm
Tool insert mounting	.3 mm / 6-hexagon	.Ø8 mm
Weight	.2.1 Kg	.2.8 Kg
Article-No.	.1124.220	.1124.210

Other speed and cutter types on request.

## TECHNISCHE DATEN

	SWINGCHAM 100	SWINGCHAM 110
Motorleistung	.20 W	.20 W
Drehzahl	.900 min <sup>-1</sup>	.500 min <sup>-1</sup>
Auslenkweg	.± 3.8°	.± 3.8°
Auslenkmoment bei 6 bar	.2.4 Nm	.2.4 Nm
Luftverbrauch	.2.5 l/sec	.5 l/sec
Luftanschlüsse	.G1/4, 8/4 mm	.G1/4, 8/4 mm
Senker	.90° / Ø12 mm	.90° / Ø12.4 mm
Senkeraufnahme	.3 mm / 6-kant	.Ø8 mm
Gewicht	.2.1 Kg	.2.8 Kg
Artikel-Nr.	.1124.220	.1124.210

Andere Drehzahlen und Senkertypen auf Anfrage.