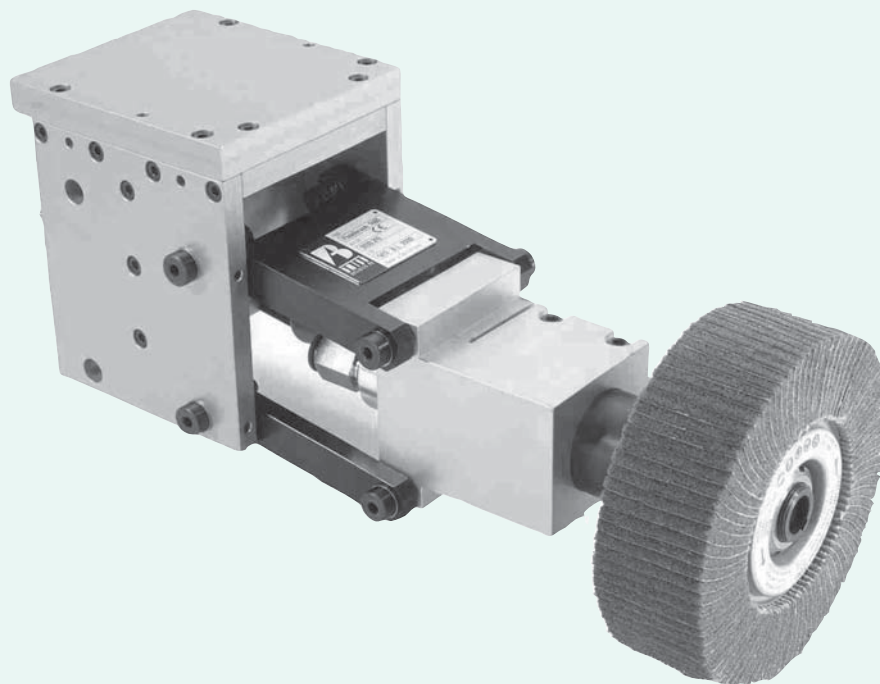




FINISHTOOL SERIES 200



FINISHTOOL SERIES 200



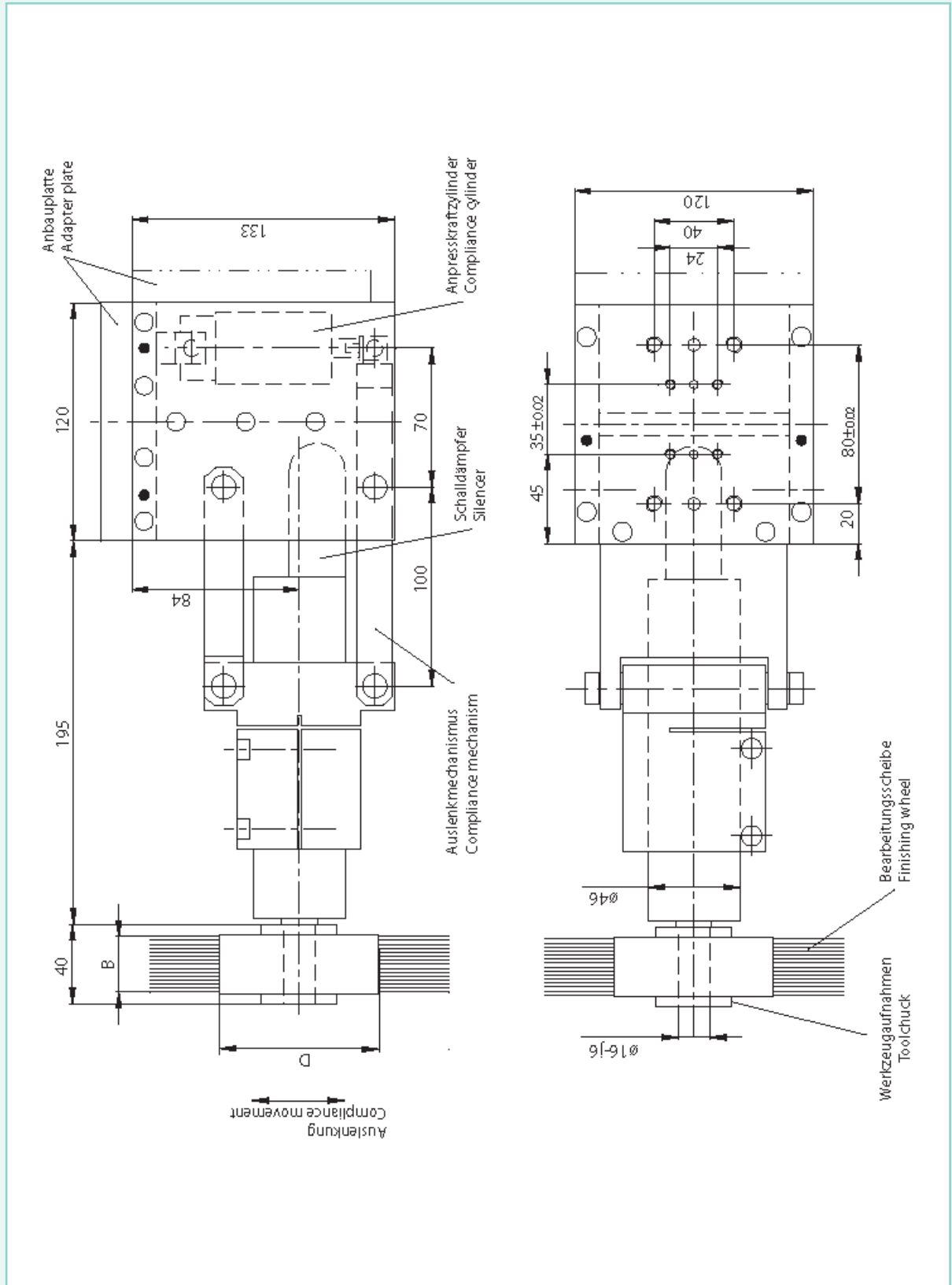
I L'utensile di finitura FINISHTOOL SERIES 200 viene utilizzato per le fasi di finitura delle superfici grazie a un movimento radiale che utilizza come utensile una mola o una spazzola. L'albero è compensato radialmente con la pressione necessaria che sarà calcolata dal programma. Il peso dell'utensile è completamente compensato e la forza di compensazione azzerata regolando la compensazione dell'aria. La compensazione è garantita da un meccanismo che assicura che il movimento sia parallelo e che l'angolo dell'utensile non cambi. L'usura dell'utensile è controllata da un sensore e compensata dal programma. L'utensile può essere montato sia in modo statico su un supporto (Toolstand) oppure direttamente ad un braccio del robot. Se il robot deve utilizzare più utensili di finitura, grazie ad un cambio rapido, può sostituirli in modo automatico. L'utensile FINISHTOOL precede l'utilizzo di mole o spazzole commerciali. Per garantire il funzionamento ottimale del motore è necessario utilizzare aria compressa filtrata e lubrificata.

GB The finishing tools FINISHTOOL SERIES 200 can be used for surface finishing with radial wheels such as grinding and polishing of almost any material. The spindle is radially compliant while the necessary pressure is monitored by program control. The weight can be completely compensated and the compliance force monitored to zero by switching the compliance air. The compliance is effected by a parallelogram mechanism that assures that the movement is parallel and that the tool angle does not change. The wear of the wheel is monitored by a sensor and compensated by program control. The tool can either be mounted stationary onto a tool stand (Toolstand) or onto the robot arm. If these tools at the robot have to be changed automatically, a tool changer (Changing Systems) is available. Commercially available wheels can be used. The speed can be optimized to the application by selection of a suitable air motor. To assure an optimal life of the air motors the compressed air must be cleaned and lubricated.

D Die Werkzeuge FINISHTOOL SERIE 200 eignen sich zur Oberflächenbearbeitung mittels Radialscheiben, wie schleifen, polieren, satinieren von fast allen Materialien. Die Bearbeitungsscheibe ist radial auslenkbar gelagert, wobei die notwendige Anpresskraft programmgesteuert variiert werden kann. Durch umschalten der Steuerluft kann das Eigengewicht kompensiert und der Anpressdruck bis auf null geregelt werden. Die Auslenkung erfolgt achsparallel über einen Parallelogramm-Mechanismus ohne Veränderung des Werkzeugwinkels. Der Werkzeugverschleiss wird mittels Sensor überwacht und programmgesteuert kompensiert. Das Werkzeug kann entweder am Roboterarm oder stationär an einem Werkzeugständer (Toolstand) angebaut werden. Sollen diese Werkzeuge am Roboter automatisch gewechselt werden, so steht ein Werkzeug-Wechselsystem (Changing System) zur Verfügung. Es können handelsübliche Bearbeitungsscheiben verwendet werden. Je nach Anwendung kann die Drehzahl durch den Einbau des entsprechenden Luftmotors angepasst werden. Für eine optimale Funktion der Luftmotoren wird gereinigte und geölte Druckluft benötigt.



FINISHTOOL SERIES 200



FINISHTOOL SERIES 200



DATI TECNICI	FINISHTOOL 220	FINISHTOOL 221	FINISHTOOL 231	FINISHTOOL 233
Potenza motore	.840 W	.840 W	.620 W	.620 W
Velocità rotazione a vuoto	.2500 g/min	.4200 g/min	.3550 g/min	.5250 g/min
Velocità nominale	.1280 g/min	.2100 g/min	.1700 g/min	.2650 g/min
Movimento di compensazione radiale	.28 mm	.28 mm	.28 mm	.28 mm
Forza di compensazione a 6 bar	.140 N	.140 N	.140 N	.140 N
Avanzamento	.50-200 mm/sec	.50-200 mm/sec	.50-200 mm/sec	.50-200 mm/sec
Consumo di aria	.16.5 l/sec	.16.5 l/sec	.14.5 l/sec	.14.5 l/sec
Ingressi alimentazione aria	.G1/4, 12mm/4mm	.G1/4, 12mm/4mm	.G1/4, 12mm/4mm	.G1/4, 12mm/4mm
Albero motore	.Ø16 x 40 mm	.Ø16 x 40 mm	.Ø16 x 40 mm	.Ø16 x 40 mm
Mola	.Ø100-250 mm	.Ø100-250 mm	.Ø100-250 mm	.Ø100-250 mm
Peso	.7 Kg	.7 Kg	.7 Kg	.7 Kg
Sensore compensazione usura	.24 V induttivo	.24 V induttivo	.24 V induttivo	.24 V induttivo
Codice articolo	.3076.210	.3076.211	.3076.231	.3076.233

ACCESSORI OPZIONALI

	Codice
Utensile Ø25.4x32 (D=25.4 mm / B=32 mm)	.3052.200
Spazzole	.su richiesta
Mole	.su richiesta

Altre velocità e utensili, motorizzazioni e tipi di mola diversi su richiesta.

SPECIFICATIONS	FINISHTOOL 220	FINISHTOOL 221	FINISHTOOL 231	FINISHTOOL 233
Power	.840 W	.840 W	.620 W	.620 W
Idling speed	.2500 rpm	.4200 rpm	.3550 rpm	.5250 rpm
Rated speed	.1280 rpm	.2100 rpm	.1700 rpm	.2650 rpm
Compliance radial movement	.28 mm	.28 mm	.28 mm	.28 mm
Compliance force at 6 bar	.140 N	.140 N	.140 N	.140 N
Feed forward rate	.50-200 mm/sec	.50-200 mm/sec	.50-200 mm/sec	.50-200 mm/sec
Air consumption	.16.5 l/sec	.16.5 l/sec	.14.5 l/sec	.14.5 l/sec
Air connections	.G1/4, 12mm/4mm	.G1/4, 12mm/4mm	.G1/4, 12mm/4mm	.G1/4, 12mm/4mm
Motor shaft	.Ø16 x 40 mm	.Ø16 x 40 mm	.Ø16 x 40 mm	.Ø16 x 40 mm
Wheel	.Ø100-250 mm	.Ø100-250 mm	.Ø100-250 mm	.Ø100-250 mm
Weight	.7 Kg	.7 Kg	.7 Kg	.7 Kg
Sensor wear compensat.	.24 V inductive	.24 V inductive	.24 V inductive	.24 V inductive
Article-No	.3076.210	.3076.211	.3076.231	.3076.233

OPTIONAL ACCESSORIES

	Code
Toolchuck Ø25.4x32 (D=25.4 mm / B=32 mm)	.3052.200
Brushes	.on request
Grinding wheels	.on request

Other speeds and toolchucks, reversible motors brush- and wheel types on request.

TECHNISCHE DATEN	FINISHTOOL 220	FINISHTOOL 221	FINISHTOOL 231	FINISHTOOL 233
Motorleistung	.840 W	.840 W	.620 W	.620 W
Leerlaufdrehzahl	.2500 min ⁻¹	.4200 min ⁻¹	.3550 min ⁻¹	.5250 min ⁻¹
Nennndrehzahl	.1280 min ⁻¹	.2100 min ⁻¹	.1700 min ⁻¹	.2650 min ⁻¹
Auslenkweg radial	.28 mm	.28 mm	.28 mm	.28 mm
Auslenkraft bei 6 bar	.140 N	.140 N	.140 N	.140 N
Vorschub	.50-200 mm/sec	.50-200 mm/sec	.50-200 mm/sec	.50-200 mm/sec
Luftverbrauch	.16.5 l/sec	.16.5 l/sec	.14.5 l/sec	.14.5 l/sec
Luftanschlüsse	.G1/4, 12mm/4mm	.G1/4, 12mm/4mm	.G1/4, 12mm/4mm	.G1/4, 12mm/4mm
Motorwelle	.Ø16 x 40 mm	.Ø16 x 40 mm	.Ø16 x 40 mm	.Ø16 x 40 mm
Scheiben	.Ø100-250 mm	.Ø100-250 mm	.Ø100-250 mm	.Ø100-250 mm
Gewicht	.7 Kg	.7 Kg	.7 Kg	.7 Kg
Sensor Verschleisskomp.	.24 V induktiv	.24 V induktiv	.24 V induktiv	.24 V induktiv
Artikel-Nr.	.3076.210	.3076.211	.3076.231	.3076.233

Ergänzendes Zubehör

Werkzeugaufnahme Ø25.4x32 (D=25.4 mm / B=32 mm)	.3052.200
Bürsten	.auf Anfrage
Schleifscheiben	.auf Anfrage

Andere Drehzahlen und Werkzeugaufnahmen, reversierbare Motoren Bürsten und Schleifscheibentypen auf Anfrage.