



FLEXITOOl SERIES 100-200



FLEXITOOl SERIES 100-200



I Il FLEXITOOl è stato progettato per sbavare con la massima efficienza l'intersezione e la superficie dei fori.

Frese e alesatori possono essere inseriti senza problemi grazie al "mandrino flottante". Il mandrino flottante può compensare in modo assiale ed angolare gli errori di inserimento dell'utensile nel foro.

Il FLEXITOOl 170 ha un movimento assiale.

La forza di avanzamento può essere impostata direttamente dal programma.

Il FLEXITOOl può essere fissato su un supporto statico (Toolstand) oppure direttamente sulla parte terminale di un robot.

Se il robot ha la necessità di usare due o più utensili, questi possono essere sostituiti automaticamente grazie ai cambi rapidi (Changing System).

Per garantire il funzionamento ottimale del motore è necessario utilizzare aria compressa filtrata e lubrificata.

GB The FLEXITOOl is designed for the efficient deburring of bore-intersections and bore surfaces.

Drills or reamers can be inserted without problems in bores due to the Floating chuck. The floating chuck can compensate radial and angular misplacement errors between bore and tool axis when inserting the tools.

The FLEXITOOl 170 is axially movable.

The necessary feed forward force can be set by the program control.

Because of that the drill or the reamer is freely compliant in all directions.

The deburring tool can either be mounted stationary onto a tool stand (Toolstand) or onto the robot arm.

If these tools at the robot have to be changed automatically, a tool changer (Changing Systems) is available.

To assure an optimal life of the air motors the compressed air must be cleaned and lubricated.

D Das FLEXITOOl dient zum Entgraten von Bohrungsverschneidungen und Bohrungsoberflächen.

Durch den Einsatz eines Ausgleichfutters werden die, beim Einführen der Reibahlen oder Bohrer entstehenden Winkel- und Achsfehler kompensiert.

Das FLEXITOOl 170 ist axial beweglich, wobei die notwendige Vorschubkraft vom Roboterprogramm variiert werden kann.

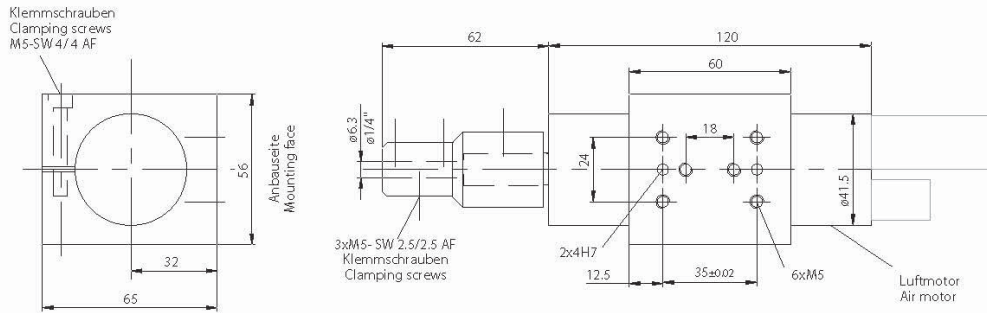
Dadurch ist die Reibahle oder der Bohrer bei diesem Werkzeug frei in alle Richtungen auslenkbar.

Das Entgratwerkzeug kann entweder am Roboterarm oder stationär an einem Werkzeugständer (Toolstand) angebaut werden.

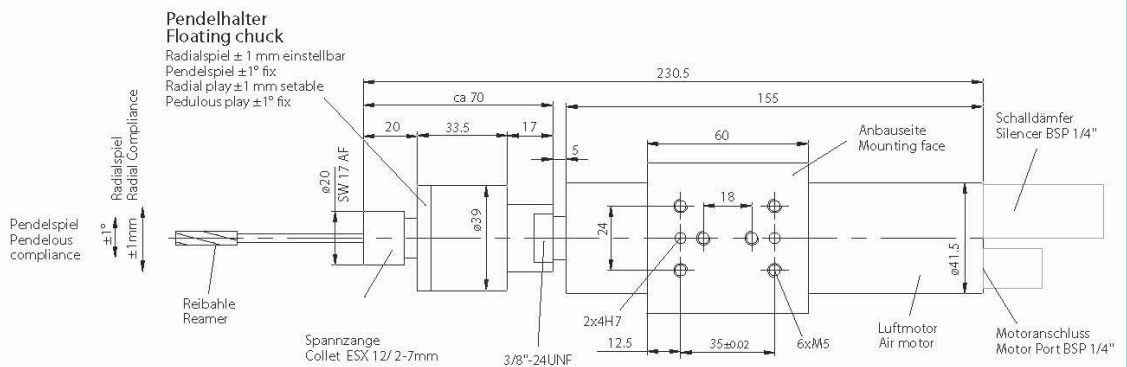
Sollen diese Werkzeuge am Roboter automatisch gewechselt werden, so steht ein Werkzeug-Wechselsystem (Changing System) zur Verfügung.

Für eine optimale Funktion der Luftmotoren wird gereinigte und geölte Druckluft benötigt.

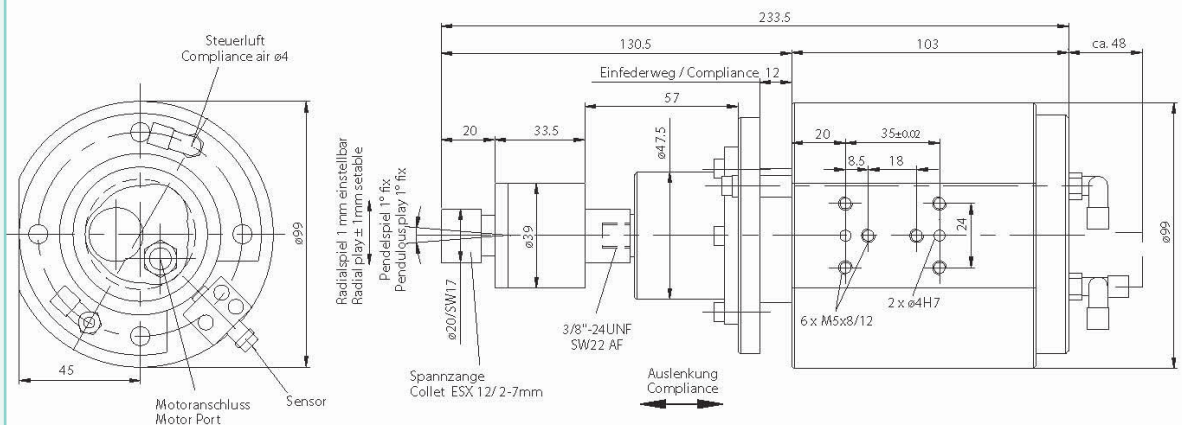
FLEXITool SERIES 100



Flexitool 110



Flexitool 150



Flexitool 170

FLEXITOOl SERIES 100



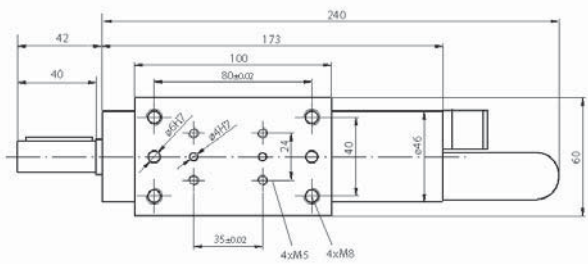
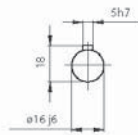
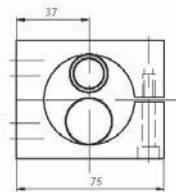
DATI TECNICI	FLEXITOOl 110	FLEXITOOl 150	FLEXITOOl 170
Potenza motore	390 W	390 W	390 W
Velocità rotazione a vuoto	5600 g/min	550 g/min	550 g/min
Velocità nominale	2600 g/min	259 g/min	259 g/min
Movimento di compensazione			12 mm
Forza di compensazione a 6 bar			60 N
Consumo di aria	8.3 l/sec	8.3 l/sec	8.3 l/sec
Ingressi alimentazione aria	G1/4, 8/4 mm	G1/4, 8/4 mm	G1/4, 8/4 mm
Montaggio utensile	Ø6.3 mm (Ø1/4")	pinza ESX 12/Ø6 mm	pinza ESX 12/Ø6 mm
Peso	1.5Kg	1.8 Kg	3.7 Kg
Sensore	.24 V induttivo	.24 V induttivo	.24 V induttivo
Codice articolo	.3140.210	.3140.250	.3140.270

SPECIFICATIONS	FLEXITOOl 110	FLEXITOOl 150	FLEXITOOl 170
Power	390 W	390 W	390 W
Idling speed	5600 rpm	550 rpm	550 rpm
Rated speed	2600 rpm	259 rpm	259 rpm
Compliance axial movement			12 mm
Compliance force at 6 bar			60 N
Air consumption	8.3 l/sec	8.3 l/sec	8.3 l/sec
Air connections	G1/4, 8/4 mm	G1/4, 8/4 mm	G1/4, 8/4 mm
Tool mounting	Ø6.3 mm (Ø1/4")	collett ESX 12/Ø6 mm	collett ESX 12/Ø6 mm
Weight	1.5 Kg	1.8 Kg	3.7 Kg
Sensor	.24 V inductive	.24 V inductive	.24 V inductive
Article-No.	.3140.210	.3140.250	.3140.270

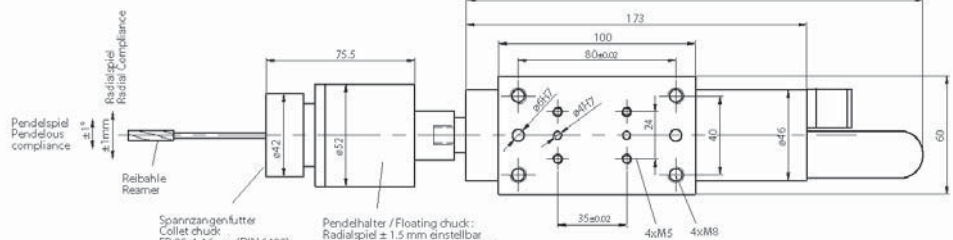
TECHNISCHE DATEN	FLEXITOOl 110	FLEXITOOl 150	FLEXITOOl 170
Motorleistung	390 W	390 W	390 W
Leerlaufdrehzahl	5600 min ⁻¹	550 min ⁻¹	550 min ⁻¹
Nennndrehzahl	2600 min ⁻¹	259 min ⁻¹	259 min ⁻¹
Auslenkweg achsial			12 mm
Auslenkraft bei 6 bar			60 N
Luftverbrauch	8.3 l/sec	8.3 l/sec	8.3 l/sec
Luftanschlüsse	G1/4, 8/4 mm	G1/4, 8/4 mm	G1/4, 8/4 mm
Werkzeugaufnahme	Ø6.3 mm (Ø1/4")	Spannzange ESX 12/Ø6 mm	Spannzange ESX 12/Ø6 mm
Gewicht	1.5 Kg	1.8 Kg	3.7 Kg
Sensor Verschleisskomp.	.24 V induktiv	.24 V induktiv	.24 V induktiv
Artikel-Nr.	.3140.210	.3140.250	.3140.270



FLEXITool SERIES 200



Flexitool 210



Pendelspiel
Pendulous
compliance

Radialspiel
Radial
Compliance

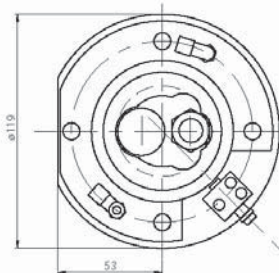
$\pm 1.1mm$

Reibhülse
Reamer

Spannzangenfutter
Collet chuck
ER 25, 1-16mm (DIN 6499)

Pendelhalter / Floating chuck:
Radialspiel $\pm 1.5mm$ einstellbar
Radial compliance $\pm 1.5mm$ settable
Pendelspiel $\pm 1^\circ$ fix
Pendular compliance $\pm 1^\circ$ fix

Flexitool 250



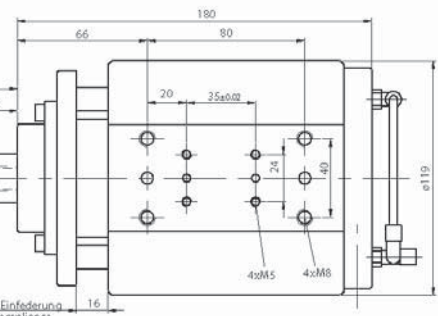
Radialspiel $\pm 1.1mm$ einstellbar
Radial play 1.1mm settable

Pendelspiel $\pm 1^\circ$ fix
Pendulous play $\pm 1^\circ$ fix

Spannzangenfutter
Collet chuck
ER 25, -16mm (DIN 6499)

Pendelhalter / Floating chuck:
Radialspiel $\pm 1.5mm$ einstellbar
Radial compliance $\pm 1.5mm$ settable
Pendelspiel $\pm 1^\circ$ fix
Pendular compliance $\pm 1^\circ$ fix

Achbiale Einfederung
Axial compliance



Flexitool 270

FLEXITOOl SERIES 200



DATI TECNICI	FLEXITOOl 210	FLEXITOOl 250	FLEXITOOl 270
Potenza motore	830 W	830 W	830 W
Velocità rotazione a vuoto	2550 g/min	570 g/min	570 g/min
Velocità nominale	1280 g/min	290 g/min	290 g/min
Movimento di compensazione			.16 mm
Forza di compensazione a 6 bar			.135 N
Consumo di aria	.17 l/sec	.17 l/sec	.17 l/sec
Ingressi alimentazione aria	G1/4, 12/4 mm	G1/4, 12/4 mm	G1/4, 12/4 mm
Montaggio utensile	.Ø16 ^{h7} x40 ch.5 ^{h7}	.pinza ER25 Ø8 mm (DIN6499)	.pinza ER25 Ø8 mm (DIN6499)
Peso	2.3 Kg	2.5 Kg	.7 Kg
Sensore			.24 V induttivo
Codice articolo	.3145.210	.3145.250	.3145.270

SPECIFICATIONS	FLEXITOOl 210	FLEXITOOl 250	FLEXITOOl 270
Power	830 W	830 W	830 W
Idling speed	2550 rpm	570 rpm	570 rpm
Rated speed	1280 rpm	290 rpm	290 rpm
Compliance axial movement			.16 mm
Compliance force at 6 bar			.135 N
Air consumption	.17 l/sec	.17 l/sec	.17 l/sec
Air connections	G1/4, 12/4 mm	G1/4, 12/4 mm	G1/4, 12/4 mm
Tool mounting	.Ø16 ^{h7} x40 key 5 ^{h7}	.collett ER25 Ø8 mm (DIN6499)	.collett ER25 Ø8 mm (DIN6499)
Weight	2.3 Kg	2.5 Kg	.7 Kg
Sensor			.24 V inductive
Article-No.	.3145.210	.3145.250	.3145.270

TECHNISCHE DATEN	FLEXITOOl 210	FLEXITOOl 250	FLEXITOOl 270
Motorleistung	830 W	830 W	830 W
Leerlaufdrehzahl	2550 min ⁻¹	570 min ⁻¹	570 min ⁻¹
Nenn-drehzahl	1280 min ⁻¹	290 min ⁻¹	290 min ⁻¹
Auslenkweg achsial			.16 mm
Auslenkraft bei 6 bar			.135 N
Luftverbrauch	.17 l/sec	.17 l/sec	.17 l/sec
Luftanschlüsse	G1/4, 12/4 mm	G1/4, 12/4 mm	G1/4, 12/4 mm
Werkzeugaufnahme	.Ø16 ^{h7} x40 passfeder 5 ^{h7}	.Spannzange ER25 Ø8 mm (DIN6499)	.Spannzange ER25 Ø8 mm (DIN6499)
Gewicht	2.3 Kg	2.5 Kg	.7 Kg
Sensor Verschleisskomp.			.24 V induktiv
Artikel-Nr.	.3145.210	.3145.250	.3145.270